



SP2200-H/Z

Gas Sample Probe Series SP®

Version SP2200-H/Z

Special Features

- Probe with filter type F-2DGF150
- Blowback gas connections 12 x 1 mm
- Circular blowback of the filter chamber
- Filter housing lid in HF version for high flow rate
- Mounting flange DN 65 PN 6 with conical flange opening for optimum cleaning of the filter chamber and sleeve size G 3/4" for sample tube

Description

The M&C probe SP2200-H/C/I/BB/BB-F/Z has been specially developed for use in cement plants.

The following options are included:	SP2200-H...
Calibration gas connection	Tube connector 6 mm o.d.
Blowback gas connection /BB and /BB-F	Tube connector 12 mm o.d.
Calibration gas injection valve	/C
Isolation valve	/I
Large valve for blowback of the filter housing area	/BB
Large valve for blowback of the integrated wire-mesh filter	/BB-F

- The calibration gas can be injected via the check valve /C directly to the probe outlet. This allows calibration gas to be supplied to the probe without expensive gas loss via the otherwise open probe inlet.
- An isolation valve /I shuts off the sample gas outlet from the heated filter chamber.
- Blowback of the filter chamber, the sample tube or the pre-filter is performed via the check valve /BB which protrudes into the heated filter chamber. The circular blowback is carried out via 3 back-purge openings.
- Via the check valve /BB-F mounted in the heated filter chamber wall, the filter element and indirectly the filter chamber and the sample tube or the pre-filter can be backpurged.

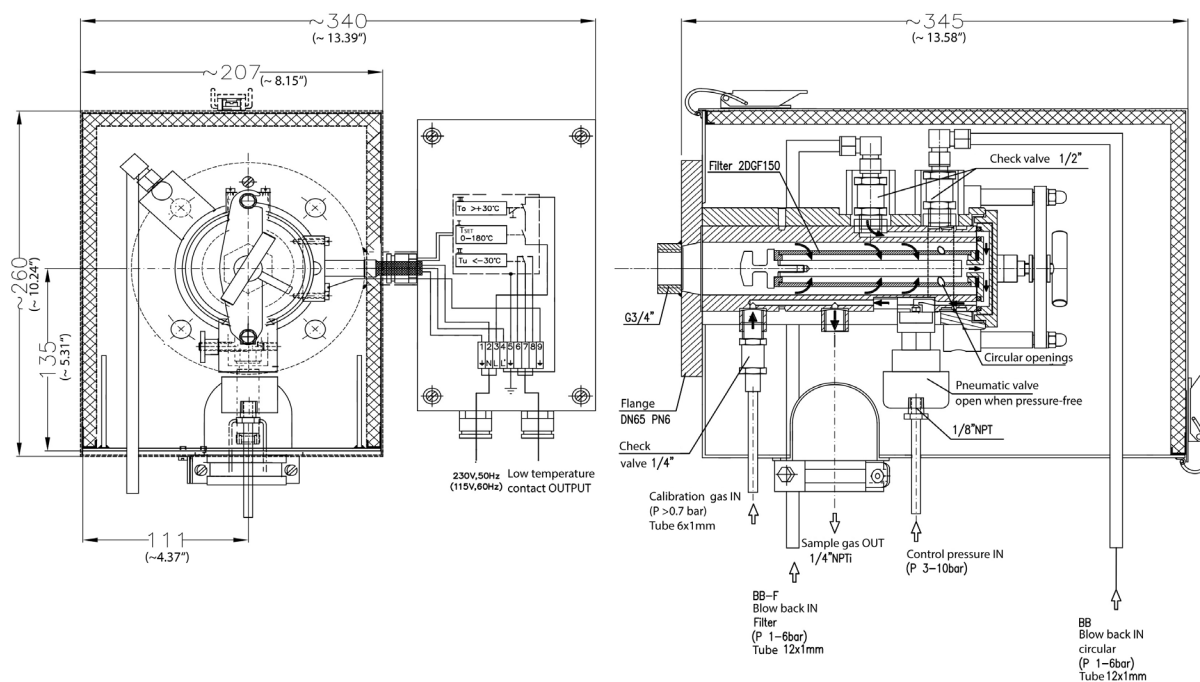
To prevent the probe from cooling down, the blowback gas should be released in short pulses.

SP2200-H/C/I/BB/BB-F/Z	
Part Number	20S2017(a)
Operating temperature	Max. 180 °C [356 °F]
Power supply	230 V 50 Hz, 800 W optional 115 V 60 Hz (a)
Calibration gas valve /C	Check valve, opening pressure: > 0.7 bar g
Isolation valve /I	Bellow valve with pneumatic actuator, control pressure: 3 to 10 bar g connection: 1/8"NPT i
Blowback valves /BB /BB-F	High-flow rate check valve, opening pressure: > 0.7 bar g, recommended: 3 to 6 bar g we recommend short pressure pulses to prevent the temperature in the blowback area from decreasing. Connection: tube connector 12 mm OD
Protective cover	Yes
Degree of protection terminal box	IP54 EN 60529
Filter housing material	Stainless steel 316Ti/316L*
Sealing materials	FPM*
Probe flange sealing material	Novapress®
Sample tube/pre-filter	Optional
Sampling pressure max.	0.4 to 6 bar* abs.
Ambient temperature	-20 up to 60 °C [-4 up to 140 °F]
Filter chamber volume	120 cm ³
Filter element porosity	2 µm/filter type F-2DGF150 (wire-mesh filter)
Thermostat, Temperature adjustment	0 up to 180 °C* [32 up to 356 °F]*
Ready for operation	After 40 minutes
Low-temperature alarm contact*	Contact rating: 250 V, 3 A~, 0.25 A = alarm point: ΔT 30 °C
Sample gas outlet connection	1 x 1/4" NPT i*
Blockback/test gas connection	Tube ø 6 mm
Power supply	230 V 50/60 Hz, 800 W / 115 V = 115 V 60 Hz, 800 W (fuse 10 A)
Electrical connections	Clamps max. 4 mm ² , 2 x PG 13.5 cable glands
Electrical equipment standard	EN 61010, EN 60519-1
Mounting flange	DN 65 PN6, Form B
Mounting flange material	SS 316Ti
Dimensions (W x H x D)	Approx. 340 mm (including terminal box) x 260 mm x 345 mm [≈ 13.4" (including terminal box) x approx. 10.2" x approx. 13.6"]
Weight	19.2 kg* [≈ 42.3 lbs]*

* Standard
Novapress® is a registered trademark for elastomer-bonded gasket material by the German company Frenzeli GmbH.

Dimensions

Electrically Heated Gas Sample Probe SP2200-H/Z with Calibration Gas Inlet, Isolation Valve and Blowback Valves BB and BB-F



Dimensions in mm (inch)